

CORPORATE PROFILE

Professionals Employers Private Limited

People™



Core Values

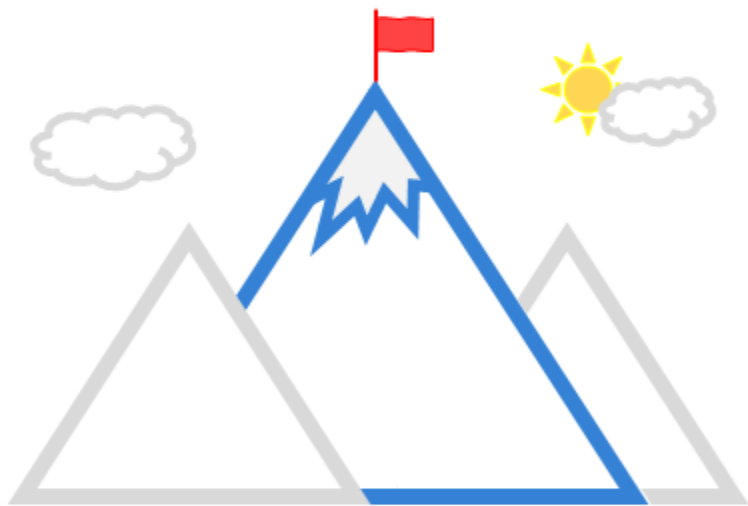
CONVENTIONAL WISDOM & RELENTLESS RESEARCH FOR BETTER WAYS TO MANAGE

MULTIPLE SOLUTIONS FOR EVERY CHALLENGE

OUR SUCCESS LIES IN THE SUCCESS OF OUR CLIENTS

WE ARE OUR PEOPLE

WE STRIVE FOR A WIN-WIN SOLUTION FOR THE COMMUNITY, THE CLIENTS AND THE PARTNERS



MISSION

Our mission is to build value based relationships by providing reliable solutions for Human Resource and Process Outsourcing.

Management
Team & Corporate
Organization

People

GOHAR SHARIF BUTT

CEO & Chief Consultant

- Founding partner; Chief Consultant
- Qualified Systems Analyst and MBA
- More than 25 years diversified experience
- Core Expertise: Human Resource Management, Organization Development, Project & Change Management, Business Process Re-engineering & Systems Planning.

MAZHAR QAYYUM KHAN

Head of HCM & OD

- Mazhar Khan joined EET Group as Head of HCM & OD in 2016. He enjoys the reputation of being a competent and versatile professional having over 15 years experience at home and abroad in human resource and organizational development.

KHURRAM SAEED KHAN

Regional Head of Sales & Services

- Khurram leads the Sales team at People using his 20+ years of Sales Experience. He joined the EET group in 2014 and has since then been responsible for acquisition and relationship management of some of the world's most prestigious multinationals including the United Nations, Huawei and IBM.

Our History

2001

Established under the name of Equity Exchange & Trust, we started as the leading HR consultancy firm

2002-03

The Outsourcing Arm was established in 2002 when we began as Professional Employer Services. Later in the year 2003, we expanded our operations and opened our offices in Lahore and Islamabad.

2005

Expanded our Outsourcing Services by introducing the verification department

- Physical
- Income Estimation

Established Out Executive Search Department

Our History

2008

In 2007, Professional Employer Services was converted to Professional Employers Private Limited (People™).

In 2008, all consulting verification and executive search divisions of EET were transferred to People™. EET now operates as a holding company for People™ and other group interests.

Successful set up of People Perfect Advisory in Dubai rolling out the People Perfect Pay card Program

2017

100000th employee
outplaced in 2017

Maintaining High Performance and Precision

Y

E

A

R

2

0

1

6

55 Million ^{AED}
Volume of Payroll
processed in UAE
Region
Dirhams

2.5 Billion ^{PKR}
Volume of Payroll
processed in
Pakistan
Rupees

Maintaining High Performance and Precision

Y

E

A

R

2

0

1

6

\$ 100

Dollars

Million USD

Volume of Payroll

Processed Globally

Maintaining High Performance and Precision

Y E A R 2 0 1 7

100,000

RECRUITED AND OUTPLACED
EMPLOYEES WORLDWIDE

Maintaining High Performance and Precision

NUMBER OF DESIGNATIONS

2000+

NUMBER OF CITIES

650

NUMBER OF SECTORS

14

Our Clients

Banking Sector

Technology & Power Sector

Other Sectors



Our Business Partners

INSURANCE



BANKERS



AUDITORS



STAFFING SOLUTIONS - WORLDWIDE

DIVERSE WORKFORCE



The Best Source For The Perfect Culturally Diverse Workforce

People™

Products and Services

EMPLOYEE
OUTSOURCING

HR STRATEGY & ORGANIZATION
DEVELOPMENT

EXECUTIVE SEARCH
SERVICE

TRAINING &
DEVELOPMENT

PROCESS
OUTSOURCING

PEOPLE *i* Software

Products and Services

Employee Outsourcing

Executive Search Service

Process Outsourcing

HR Strategy & Org
Development

Training & Development

PEOPLE i Software

People™ offers following services as part of Employee Outsourcing

1. Recruiting, hiring and outplacement of employees.
2. Completion of joining formalities, background checks and verifications.
3. Maintenance of personal files.
4. Processing of salaries and pay packages.
5. Income tax management for employees.
6. Medical benefits / insurance management.
7. Prerequisite handling.
8. Terminal benefits management.
9. Performance appraisal result coordination.
10. Training needs analysis and facilitation.
11. Subsidies and employees loan processing and custodial services.
12. Staff surveys and motivational analysis.
13. Satisfying EOBI, social security and other work place regulations.
14. Indemnifying the organization of all statutory legal obligations.



People™

Products and Services

Employee Outsourcing

Executive Search Service

Process Outsourcing

HR Strategy & Org
Development

Training & Development

PEOPLE i Software

People™ offers following services as part of Executive Search Service

Executive Search Services is one of our fastest growing divisions. PEOPLE™ specializes in search and placement of board members and top to junior level managers, for a diverse array of clients.

1. Recruitment Process Outsourcing
2. Targeted Search
3. Resume/CV Hosting and Screening
4. Candidate Interviewing, Testing & Behavioral Analysis
5. Antecedent Verification
6. Participation in Job Fairs/Universities



Products and Services

Employee Outsourcing

Executive Search Service

Process Outsourcing

HR Strategy & Org
Development

Training & Development

PEOPLE i Software

01

02

03

04

05

06

WPS
PEOPLE
Perfect Pay
Card

PEOPLE
Payroll
Management

Verification
Services

Valuation
Services

Income
Estimation
and Business
Appraisal

Local/SME
Credit
Report

Products and Services

Employee Outsourcing

Executive Search Service

Process Outsourcing

HR Strategy & Org
Development

Training & Development

PEOPLE i Software

01

WPS (Wage Processing System) COMPLIANT & SECURITY ENABLED PAY CARD - PEOPLE™
PERFECT PAY CARD

Card user can use People™ Perfect Pay on:

- ATMs using UAE Network Switch within UAE
- 1.4 million ATMs worldwide displaying VISA logo
- Use on POSs in 30 million merchant outlets worldwide
- Use on line to buy, book, etc.

(for UAE Region Resources)



People™

Products and Services

Employee Outsourcing

Executive Search Service

Process Outsourcing

HR Strategy & Org
Development

Training & Development

PEOPLE i Software

01

P E O P L E P E R F E C T P A Y

**PROUD
PARTNERS**



Powered by



Sponsor Bank



Global Payment
Gateway



UAE Switch
Network

People™

Products and Services

Employee Outsourcing

Executive Search Service

Process Outsourcing

HR Strategy & Org
Development

Training & Development

PEOPLE i Software

01

P E O P L E P E R F E C T P A Y

BENEFITS TO EMPLOYEES

- Replace Checks/Bank Accounts to get salary
- Experience increased safety and security
- Secured and timely salary transfers
- Can be used to buy through POS in the shopping malls around the world and/or on the Web
- Can be used ATMs on UAE Switch Network

BENEFITS TO EMPLOYERS

- Fully compliant with WPS and UAE labor law
- No hassle to open a bank account to transfer salaries
- Worldwide card acceptance at POS & ATMs displaying VISA Logo
- Monitor and track salary disbursements through reports

Products and Services

Employee Outsourcing

Executive Search Service

Process Outsourcing

HR Strategy & Org
Development

Training & Development

PEOPLE i Software

02 PEOPLE Payroll Management

Payroll processing inside your business is a time consuming process. Outsourcing payroll allows a business to concentrate on strategic tasks which ultimately effects bottom line. Regardless of the number of people employed by your business, attending to payroll demands a great deal of time and detail. Therefore Payroll management by PEOPLE™ helps clients in:

- Time saving
- Reduced cost
- Avoid mistakes
- Offer direct deposit
- Enhance security

Products and Services

Employee Outsourcing

Executive Search Service

Process Outsourcing

HR Strategy & Org
Development

Training & Development

PEOPLE i Software

03 Verification Services

DOCUMENT VERIFICATION

- Education Certificate Verification
- Professional License/ Certificate Verification
- Pre- Employment Verification
- Personal or Professional Reference Verification
- Address Verification

PHYSICAL VERIFICATION

- Applicant's Verification of Consumer Loans
- Applicant's Residence & Office Address Verification
- Reference's Residence & Office Address Verification
- Applicant's Bank Statement Verification
- Vehicle Valuation Services
- Vehicle Registration Services

Products and Services

Employee Outsourcing

Executive Search Service

Process Outsourcing

HR Strategy & Org
Development

Training & Development

PEOPLE i Software

04 Valuation Services

- Valuation Services have been designed to address a broad range of information needs of Banks and Financial institutions exposed to market, credit and operational risks coming on stream with new business and investment opportunities.

05 Income Estimation and Business appraisal

- Loan origination and workflow management
- Generation of risk rating – customer, facility and combined exposure ratings
- Group analysis functionality
- Pre-defined and user defined reporting system
- Comprehensive audit trail around the system

06 Local/SME Credit Report

- Risk Quantification (Validation, Score, Rating, Credit Rating)
- Counterparty Data Capture: (Profile and Hierarchy, Bank Statements, Financials, Non Financials Maintenance)
- Application Inputs (Application Details Maintenance, Product Details including sharing of Facilities, Collaterals Maintenance including sharing of collateral)
- Industry Evaluation



Products and Services

Employee Outsourcing

Executive Search Service

Process Outsourcing

HR Strategy & Org
Development

Training & Development

PEOPLE i Software

People™ offers following services in the HR consulting area:

PEOPLE™ designs and implements human resource strategies in order to bring organizational success ensuring sustainable competitive advantage and effective human resource management.

1. Development of an appropriate organizational model
2. Job description documents
3. Job evaluations and assessments
4. Salary ranges and bench marking remuneration
5. Performance management systems
6. Defining perquisites and formulating policies
7. Drafting of employee reference manuals

Products and Services

Employee Outsourcing

Executive Search Service

Process Outsourcing

HR Strategy & Org
Development

Training & Development

PEOPLE i Software

People™ offers following services as part of Training and Development:

CUSTOMIZED TRAINING

- Assess training needs
- Set training objectives
- Prepare training content
- Select training methods and prepare materials
- Organize and deliver training course
- Develop evaluation strategy

STRATEGIC CONFERENCES

- Organizational Development
- Financial Services

OPEN ENROLLMENT

- CFA Exams
- FRM Exams
- Credit Basics for Credit Officers
- Cash Officers/Tellers Readiness
- Call Centre Agent
- Basic Customer Care for Sales & Service Representatives.
- Communication Skills
- Presentation & Writing Skills
- Coaching Skills.
- Conflict Resolution Skills.
- Team Building.

Products and Services

Employee Outsourcing

Executive Search Service

Process Outsourcing

HR Strategy & Org
Development

Training & Development

PEOPLE i Software

People  - Augmented Outsourcing Technology



HR SERVICES



COMPENSATION
& BENEFITS



PERFORMANCE
MANAGEMENT



RECRUITMENT &
SELECTION



CONDUCT



ANALYTICS

Products and Services

Employee Outsourcing

Executive Search Service

Process Outsourcing

HR Strategy & Org
Development

Training & Development

PEOPLE i Software

CLIENT SIDE PORTALS

- Employee
- Line Manager
- Human Resource Manager
- Administration Manager
- Finance Manager
- Business Leader
- CEO

PEOPLE SIDE PORTALS

- Sales
- Customer Relationship
- Technical Support
- Finance
- Administrator
- Compliance
- Business Leader



Our International Offices

PAKISTAN

46 T Block, 54000 P O Box 54660,
Gulberg II, Lahore. Pakistan

UAN : 111 – 000 - 737
Fax : +92 - 42 - 577 7819
www.people.com.pk

DUBAI

Office # C 604, Business Bay,
Ontario Tower, Dubai, UAE
P O Box 121400

Phone : + 971 – 4 - 453 4246
Fax : + 971 - 4 - 453 4248
www.peopleperfectae.com

Our Regional Offices

LAHORE OFFICE

46 T Block, 54000,
Gulberg II, P O Box 54660, Lahore.
UAN:111-000-737
Fax: +92-42-577 7819

ISLAMABAD OFFICE

Room # 8, Executive Business Center,
61-A Jinnah Avenue, Saudi Pak Tower, Islamabad.
Tel#: +92-051-2800397-98
Direct # 051-8357252, 8437252
Ext# 3102

KARACHI OFFICE

Plot One - B/1, Sector 30, Korangi
Industrial Area, Karachi 74900
UAN:111-000-737
Tel: +92 (21) 3713 1688-93
Tel: +92 (21) 3512 2361-70
Fax: +92-21-35122372

Pakistan Website

www.people.com.pk

People™

www.peopleperfectae.com

THANK YOU



Log on to www.people.com.pk